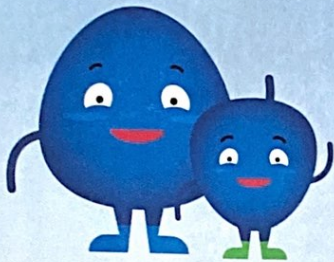


COVID-19 SHOULD I COME TO SCHOOL?



HOW TO SCREEN FOR COVID-19

IF I HAVE:

THEN:

1 NO SYMPTOMS



Proceed to school

**2 EXPOSURE,
NO SYMPTOMS**



Cannot go to school

Home for 14 days since exposure

**3 DIAGNOSIS,
NO SYMPTOMS**



Cannot go to school

Home for 10 days since first positive COVID-19 test

4 AT LEAST 1 SYMPTOM



Cannot go to school

Home until:

- Fever
- Chills
- Shortness of breath/
breathing difficulty
- New cough
- New loss of taste or smell

- 10 days since first symptoms
- No fever for 3 days (without fever medicine)
- 3 days of symptom improvement, including coughing and shortness of breath



West Virginia DEPARTMENT OF
EDUCATION



BEST HEALTH PRACTICES IN YOUR SCHOOL



6 ft.



Maintain six feet
of social distance

Strongly suggest
a face mask
or face covering



Clean hands with
soap and water
or hand sanitizer

Avoid touching
your face



Do not share pens/
writing utensils



Cough/sneeze into
your elbow or a tissue

Do not come to school
if you're feeling sick



West Virginia DEPARTMENT OF
EDUCATION

